

This is a fragment recovered from the site of the airplane crash which killed former Notre Dame football coach, Knute Rockne, and seven other persons near Kansas, Kansas on March 31, 1931.

The plane, a T.A.T. Mailbox "Buckeye Airliner" a Sikorski F-4 type, was flying from Kansas City to Wichita in heavy fog and apparently lost a wing before crashing on the Grand River farm.

Some 40 years later on January 31, 1971, two volunteers retrieved this and other bits of wreckage while searching the site with metal detectors. The fragments lying directly in front of the monument which now marks the site, were found by J.V. Mark and E.B. Van Syckle.

T.A.T. (Trans America Transport) later became TWA (Trans World Airlines). The ill-fated flight brought to an end the legendary career of one of college football's most beloved coaches.

Knute Rockne, credited with introducing the forward pass to football, is perhaps best remembered for his inspirational halftime speech in which he exhorted his Notre Dame team to "Win one for the Gipper".



1414



1414

This is a fragment recovered from the site of the airplane crash which killed famed Notre Dame football coach, Knute Rockne, and seven other persons near Bazaar, Kansas on March 31, 1931.

The plane, a T.A.T. Maddux Tri-Motor Airliner a (Fokker F-10 type), was flying from Kansas City to Wichita in heavy fog and apparently lost a wing before crashing on the Seward Baker farm.

Some 40 years later, on January 31, 1971, two salvagers retrieved this and other bits of wreckage while searching the site with metal detectors. The fragments, lying directly in front of the monument which now marks the site, were found by J.V. Mark and E.B. Van Scyoc.

T.A.T. (Trans America Transport) later became TWA (Trans World Airlines). The ill-fated flight brought to an end the legendary career of one of college football's most beloved coaches.

Knute Rockne, credited with introducing the forward pass to football, is perhaps best remembered for his inspirational halftime speech in which he exhorted his Notre Dame team to "Win one for the Gipper!"

1414



[OHTH 0002 2010-145]



PICTURE FRAMES
& Picture Hanging
Lloyd and Joy Lee
1000 14th Street, NW
Washington, DC 20004
202-331-1111
www.pictureframes.com

1414

FRAMES CUSTOM WORK PRINTS ART SUPPLIES

PICTURE FRAMES

by Caroline Klugeade

Lloyd and Joy Lam
Owners

1313 ATLANTIC STREET
N. KANSAS CITY, MO 64116
(816) 474-5230

MEADOWBROOK VILLAGE
5336 WEST 95TH STREET
PRAIRIE VILLAGE, KS 68207
(913) 648-1303

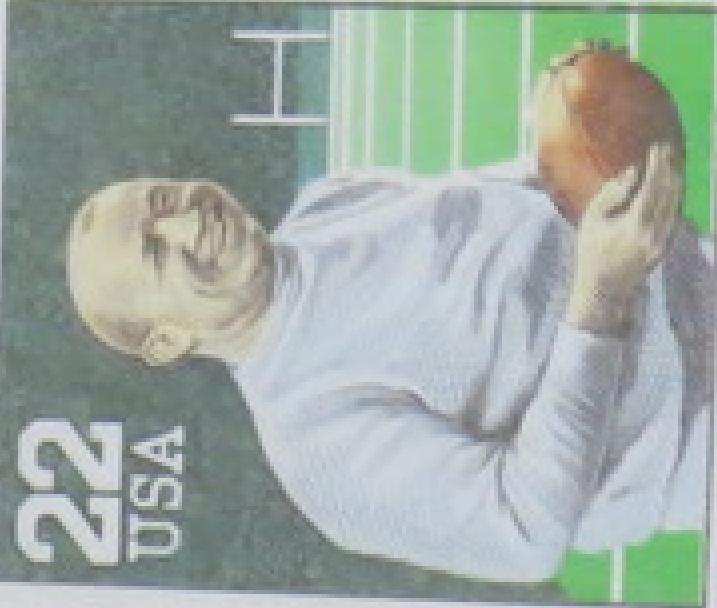
DIVISION OF CLASSIC FRAMES, INC.

1414

[OATH acc# 2010-145]

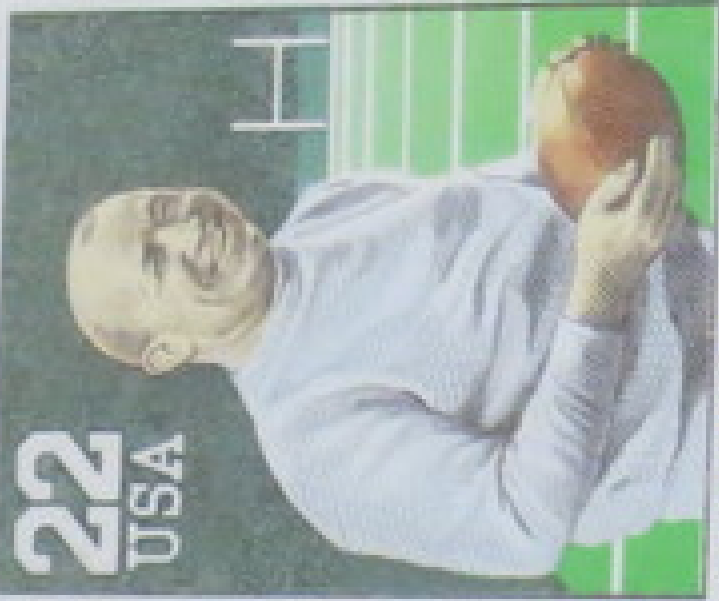
1414

22
USA



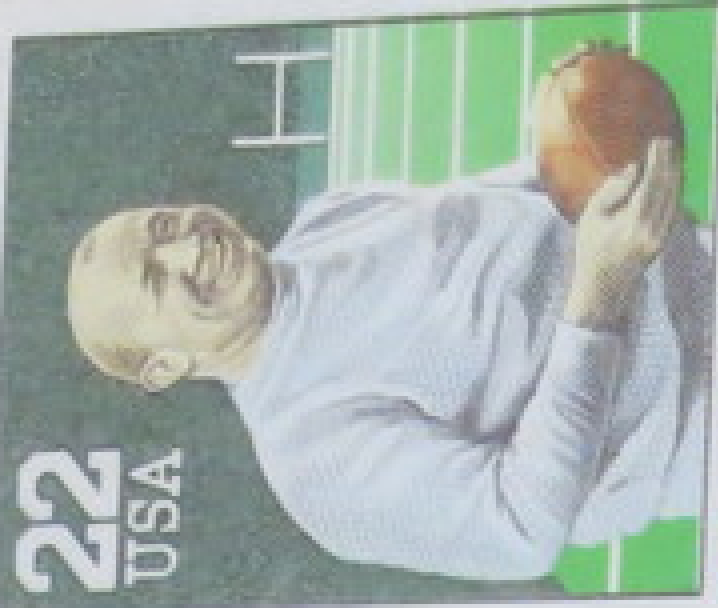
KNUTE ROCKNE

22
USA



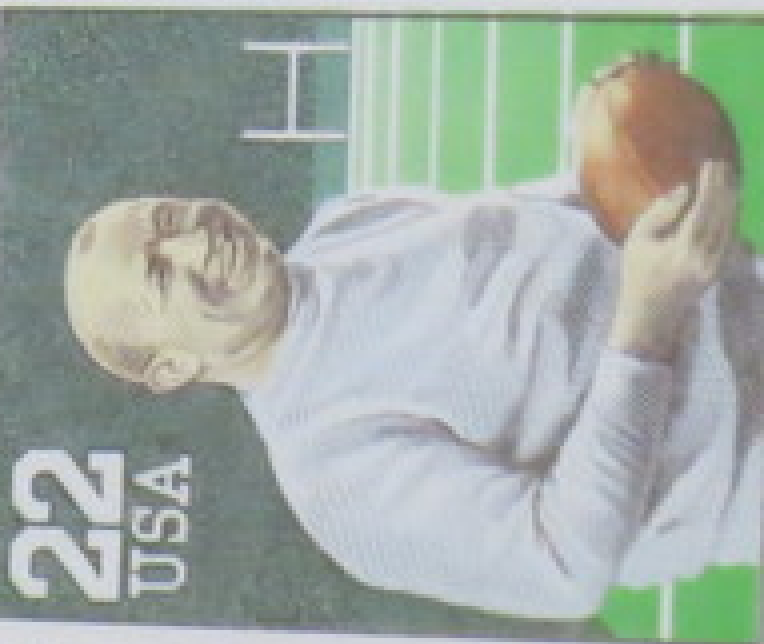
KNUTE ROCKNE

22
USA



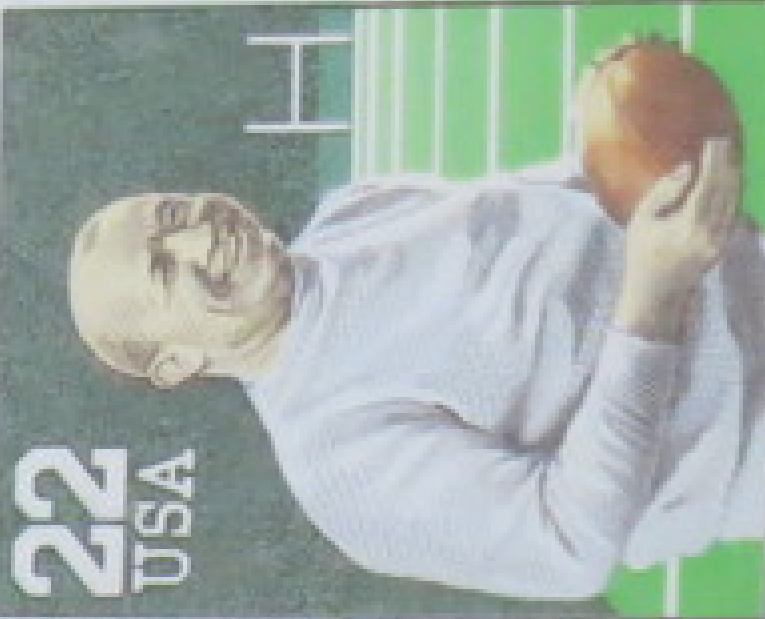
KNUTE ROCKNE

22
USA



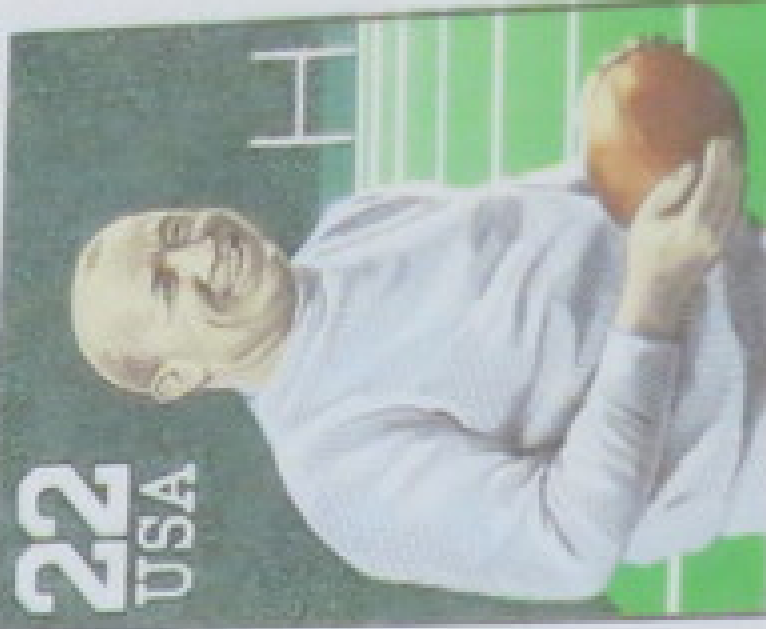
KNUTE ROCKNE

22
USA



KNUTE ROCKNE

22
USA



KNUTE ROCKNE

This is a fragment recovered

from the site of the airplane crash which killed famed Notre Dame football coach, Knute Rockne, and seven other persons near Bazaar, Kansas on March 31, 1931.

The plane, a T.A.T. Maddux Tri-Motor Airliner a (Fokker F-10 type), was flying from Kansas City to Wichita in heavy fog and apparently lost a wing before crashing on the Seward Baker farm.

Some 40 years later, on January 31, 1971,

two salvagers retrieved this and other bits of wreckage while searching the site with metal detectors.

The fragments, lying directly in front of the

monument which now marks the site, were found by J.V. Mark and E.B. Van Scyoc.

T.A.T. (Trans America Transport)

later became TWA (Trans World Airlines). The ill-fated flight brought to an end the legendary career of one of college football's most beloved coaches.

Knute Rockne, credited with

introducing the forward pass to football, is perhaps best remembered for his inspirational halftime speech in which he exhorted his Notre Dame team to

“Win one for the Gipper!”

Knutie Roczne, credited with
introducing the forward pass to football, is perhaps
best remembered for his inspirational halftime speech in
which he exhorted his Notre Dame team to
"Win one for the Gipper!"



FRAMES CUSTOM WORK PRINTS ART SUPPLIES

PICTURE FRAMES

by Caroline Kingcade

Lloyd and Joy Lam
Owners

1313 ATLANTIC STREET
N. KANSAS CITY, MO 64116
(816) 474-5230

MEADOWBROOK VILLAGE
5336 WEST 95TH STREET
PRAIRIE VILLAGE, KS 66207
(913) 648-1303

DIVISION OF CLASSIC FRAMES, INC.

[OATH acc # 2010-145]