

University of Notre Dame Religious Bulletin
September 19, 1931

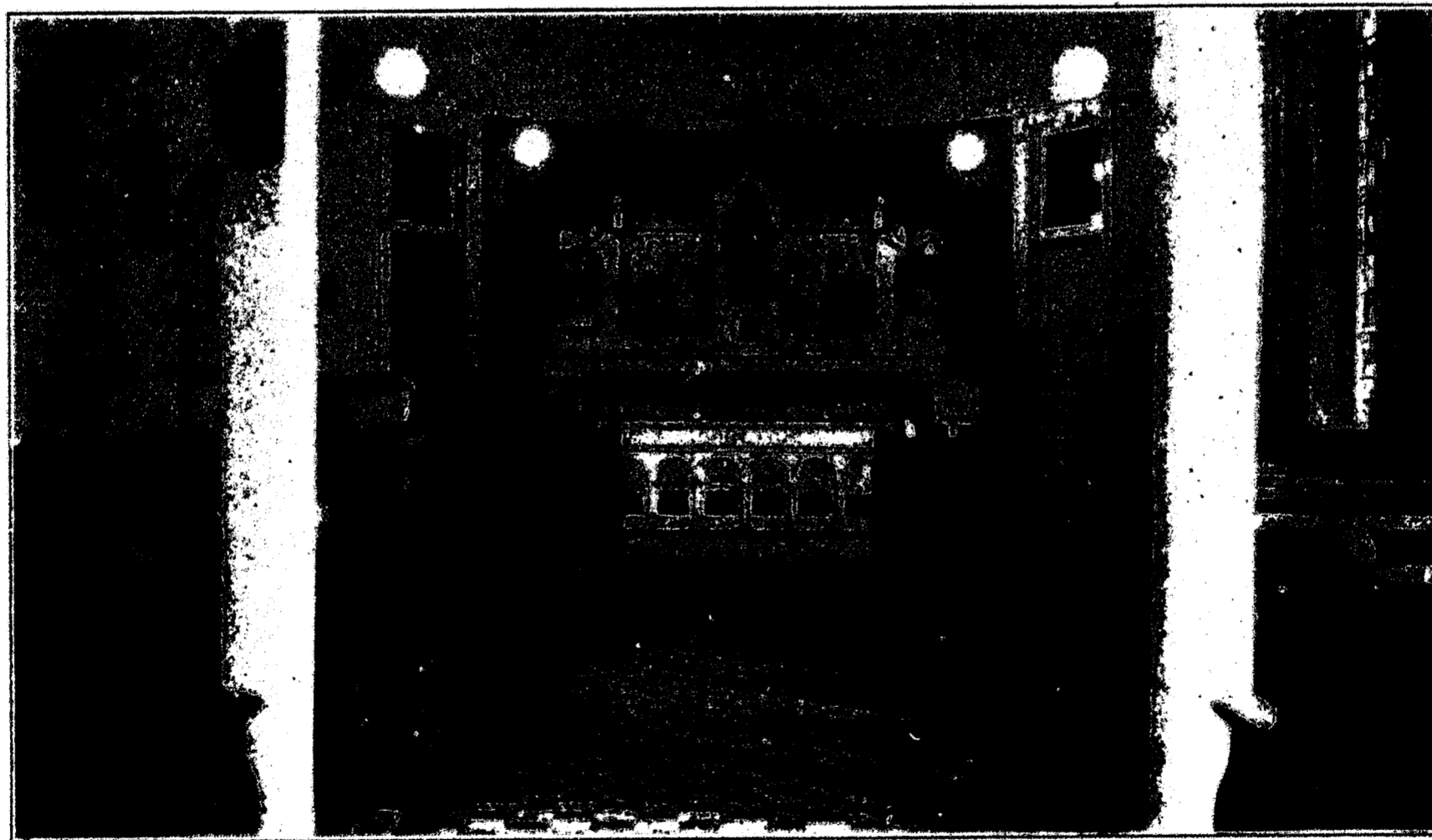
ILLUSTRATED GUIDE

THIS IS SORIN HALL



(IN FRONT OF THE CHURCH)

AND THIS IS THE SORIN HALL CHAPEL



(IN THE RIGHT WING OF THE HALL)

On Sundays, Confessions are heard and Holy Communion is distributed in this chapel continuously from 7:00 till 8:30 a. m. Tomorrow, BECAUSE FRESHMEN ARE REQUIRED TO ATTEND THE OPENING MASS AT 9:00, these facilities will begin at 6:30. This will give you an opportunity to receive Holy Communion before breakfast, and go to Mass later.

On week days, continuous facilities for the Sacraments are offered in this chapel from 5:15 a. m. till noon.