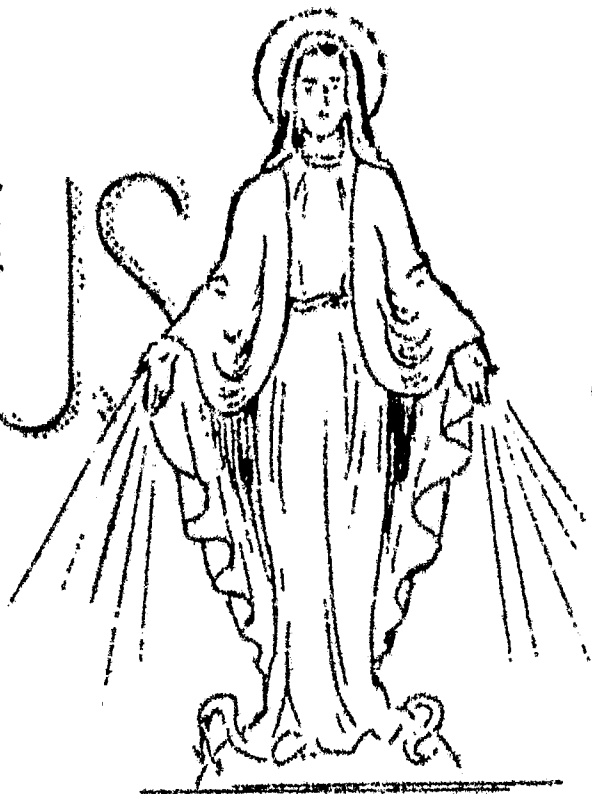


VISIT # 3

MIRACULOUS

STATUE

TONIGHT



Statue here at 5:00 P.M.
Pilgrimage opens with sermon
and Benediction.

Rosary

at 7:30 p.m.

The Incident of The Eyes

Two priests and a sick man testify to a prodigy that took place when they visited the statue of Our Lady of Cap de la Madeleine--a replica of this statue, itself miraculous is now in the church for your veneration.

The eyes of the statue came to life when the sick man was at prayer before the statue. The eyes opened very wide and looked into the distance. The two priests observed the wonder, along with the sick man, and they discussed the incident afterwards among themselves to make sure they they were not being deceived.

The shrine of the statue in Canada has had a steady succession of cures and a greater number of moral miracles. Like the shrine at Lourdes, it has its crutches and other walking aids left there by those pilgrims who limped in and walked out.

The Bridge of Ice

When the church at Cap de la Madeleine was under construction, Our Lady came to the aid of the builders. Stone for the church was not available on the parish's side of the St. Lawrence River. It had to be prepared across the wide stream. Though the river was tremendously broad at a point near the church, it sometimes freezes over, being so far north.

The men of Cap de la Madeleine hoped for a bridge of ice over which to transport the stone for the project. But when the winter months passed without sufficient ice, all seemed futile. Yet the people, led by their parish priest, kept saying the rosary for the bridge of ice.

In the middle of March, when ice was out of season, frigid weather came and a road of ice was formed from shore to shore. Forty men worked hard to bring the stone over the river. The ice was thin in spots, but there were no accidents. The ice disappeared once the transportation job was over. The people call this the Rosary Bridge. It was certainly a remarkable answer to prayer.

Attend 6:15 A.M. Solemn Mass Saturday

Sacrifice is always an intimate part of every pilgrimage. If your intentions are of importance to you, then you will be willing to make some sacrifice cheerfully that your prayers will be heard. The Solemn Mass tomorrow ought to be part of your pilgrimage to the miraculous statue of Our Lady. Offer up the inconvenience of early rising as part of your petition. Try to get to confession tonight; there may be a long line at the church tomorrow at Mass. The President of the University will be celebrant of the Mass.

Brief Reminders

No 9:00 A.M. Mass Sunday (8:30 instead-formal opening of school)
Mission opens (Sun. 7:00 P.M.) for B-P, Farley, Cav. Zahm, St. Eds and Off-Campus
Religious Bulletin September 19, 1947 University of Notre Dame